

nuaire BPS Size 10 Revit Model Features

These models use type catalogues so all variants of the size 10 BPS AHU range that use the same heating/cooling coil combination can be inserted using the same .rfa file (see Read Me file attached for further info).

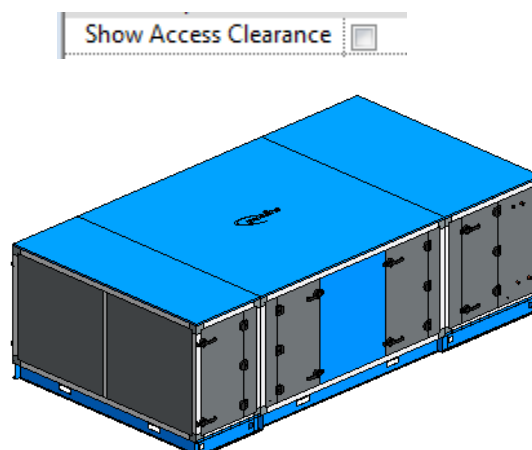
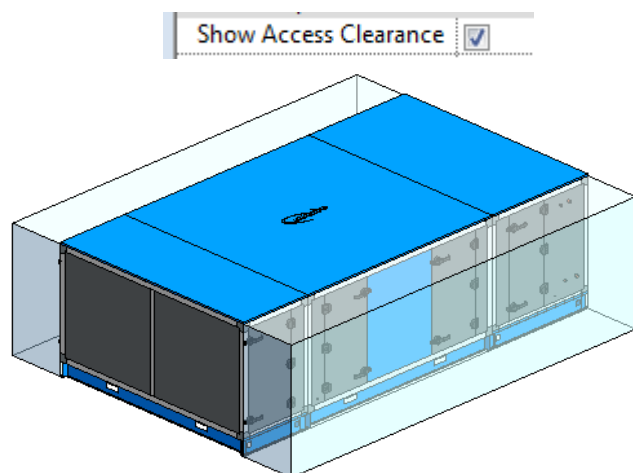
The file name relates directly to that of the item code of the unit i.e. **B10H/LR/ES-L** and the variants included are as follows:

Code	Type of Coil						
	Heating			Cooling			
	Electric	LPHW	None	Chilled Water	None	Reverse Cycle DX with Condenser	Reverse Cycle DX (No Condenser)
B10-EC	■			■			
B10-EN	■				■		
B10-ER	■					■	
B10-EX	■						■
B10-LC		■		■			
B10-LN		■			■		
B10-LR		■				■	
B10-LX		■					■
B10-NC			■	■			
B10-NN			■		■		
B10-NX			■			■	
B10-NR			■				■

The B10-** models included have the following options in the Model Properties Category in the Properties Window

Model Properties	
Show Room Side Silencer	<input type="checkbox"/>
Show Atmosphere Side Silencer	<input type="checkbox"/>
Show Access Clearance	<input checked="" type="checkbox"/>

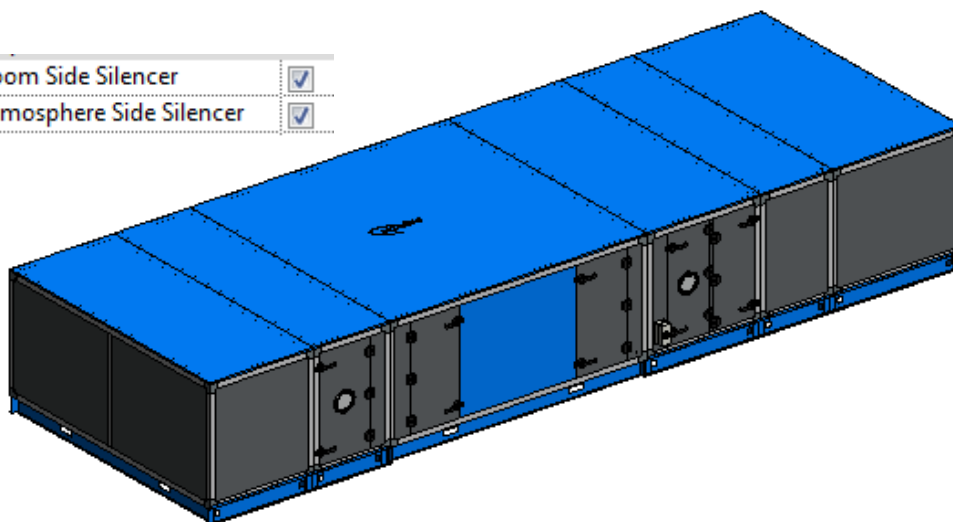
1. 'Show Access Clearance' allows you to show or hide the access clearance transparent area of the model. Please note that the access clearance area will still affect the collision detection even if turned off).



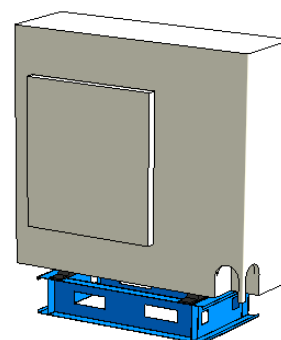
Continued on next page...

2. You can choose to show appropriate silencers using the tick boxes below. These will be individually scheduled as Duct Accessories.

Show Room Side Silencer	<input checked="" type="checkbox"/>
Show Atmosphere Side Silencer	<input checked="" type="checkbox"/>



3. The zip file also contains a separate model of the matched condenser (outdoor unit) we offer with this unit (**BPS-CU-MIT32-14**) (ER, LR or NR models only). (1No. required).



4. If the model is inserted into the project without using the correct procedure then you will be alerted via a red box and '--- ERROR ---' wording around the model. The model code will also show this same message in the schedules. Please then refer to the additional 'Important - Read Me First' pdf file packaged with this family for the correct insertion procedure.

