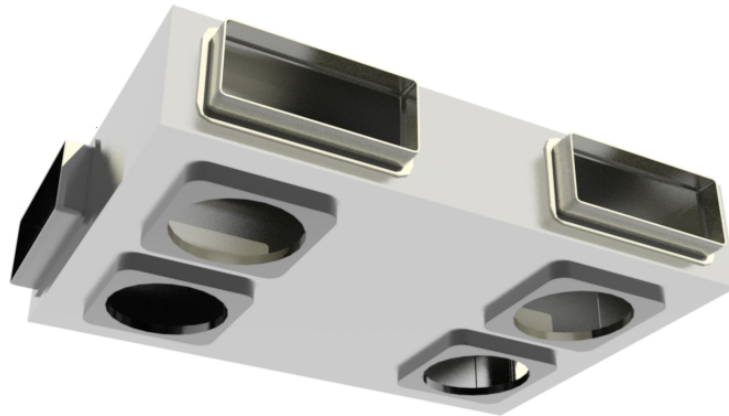




DB-WH1

Revit Model Features

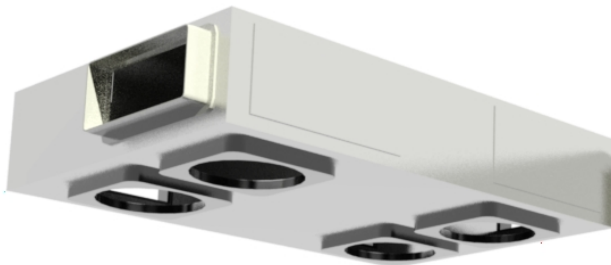


The DB-WH1.rfa model attached includes the following options in the Model Properties category in the Properties window

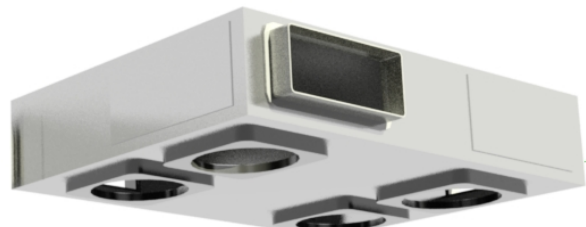
Model Properties	
Swap Spigot 1	<input type="checkbox"/>
Swap Spigot 2	<input type="checkbox"/>

1. 'Swap Spigot 1 & 2' allows you to switch the side spigots to the back of the unit as desired.

Swap Spigot 1 ☐



Swap Spigot 1 ☒



The spigot number (1 or 2) can be seen from the floor plan view

