

EST1-19-R Revit Model **Features**

1. The model uses a type catalogue so sizes 1 and 19 of the Roof-Mounted Quietscroll EST range with a spigot-to-grille configuration can be inserted using the same .rfa file (see Read Me file attached for further info)

The est1-19-r.rfa model attached includes the following options in the Model Properties category in the Properties window

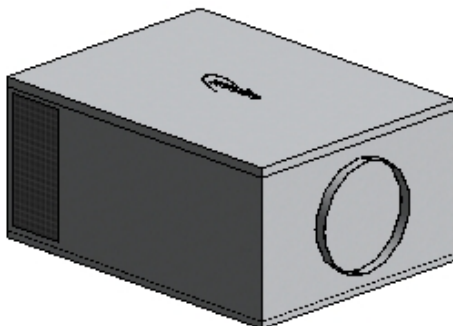
Model Properties	
Show Room Side Silencer	<input type="checkbox"/>
Podded Room Side Silencer	<input type="checkbox"/>
Long Room Side Silencer	<input type="checkbox"/>
Show Access Clearance	<input checked="" type="checkbox"/>
Curb Mounted	<input type="checkbox"/>

2. 'Show Room Side Silencer' allows you show or hide the appropriate matched silencers on each end. The silencers that appear are based on our CA range i.e. CA63S etc.

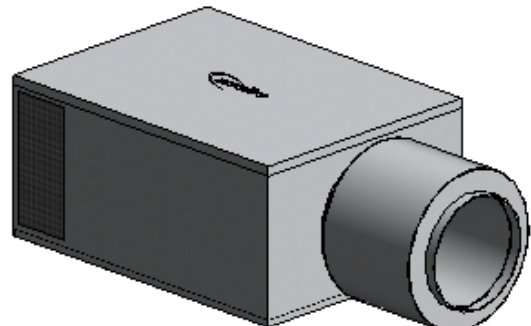
This will only work for EST-R sizes 4 and up. We do not offer a CA silencer with a spigot size small enough for the EST1-3 i.e. <Ø250mm, therefore they will not be shown.

The duct connector will also be moved to the end of the silencer.

Show Room Side Silencer ☐

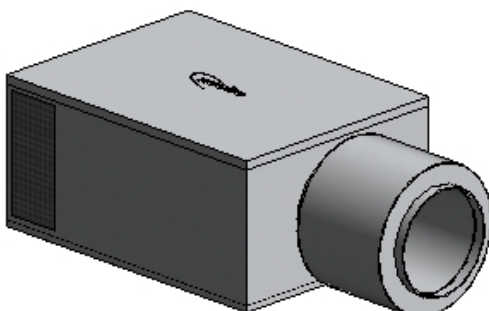


Show Room Side Silencer ☒

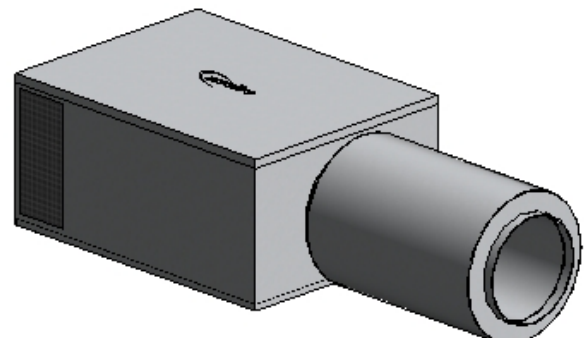


3. 'Long Room Side Silencer' allows you to change the length of the silencer from short to long i.e. CA63L rather than CA63S.

Long Room Side Silencer ☐

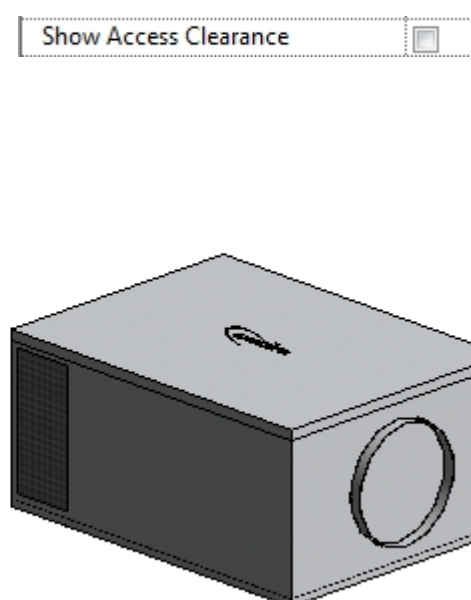
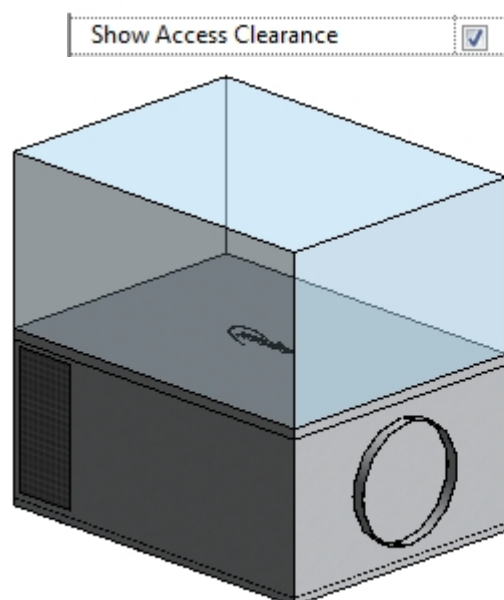


Long Room Side Silencer ☒



Continued on next page...

4. 'Show Access Clearance' allows you to show or hide the access clearance transparent area of the model.



5. 'Curb Mounted' takes into account the lip under the unit for curb mounting and therefore the model will sit that little bit lower instead of floating above the curb.

