

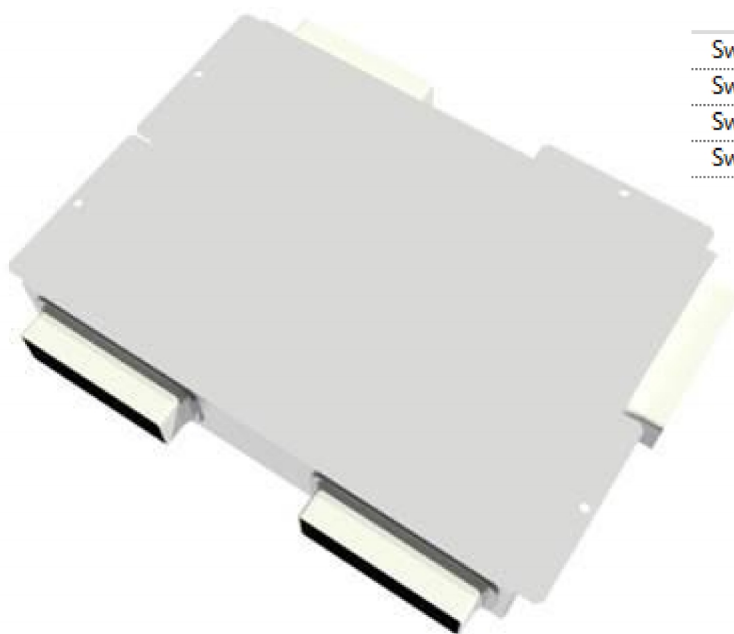
# FF-WH1

## Revit Model Features

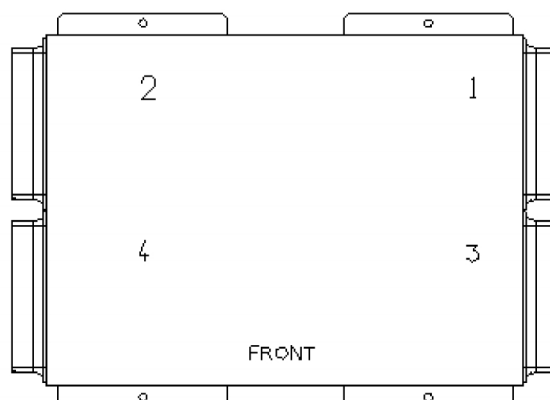
The ff-wh1.rfa model attached includes the following options in the Model Properties category in the Properties window

Model Properties	
Swap Spigot 1	<input type="checkbox"/>
Swap Spigot 2	<input type="checkbox"/>
Swap Spigot 3	<input type="checkbox"/>
Swap Spigot 4	<input type="checkbox"/>
Hide Bottom Spigots	<input type="checkbox"/>

1. 'Swap Spigot 1-4' allows you to swap any of the 4 rectangular spigots with their corresponding side position currently occupied by the hanging bracket.



Swap Spigot 1	<input type="checkbox"/>
Swap Spigot 2	<input checked="" type="checkbox"/>
Swap Spigot 3	<input checked="" type="checkbox"/>
Swap Spigot 4	<input checked="" type="checkbox"/>



2. 'Hide Bottom Spigots' is there for when the unit is to be close coupled to the main MRXBOX\*-WH1 unit. In this situation the WH1's spigots will pass into the first fix box.

Hide Bottom Spigots ☒

