

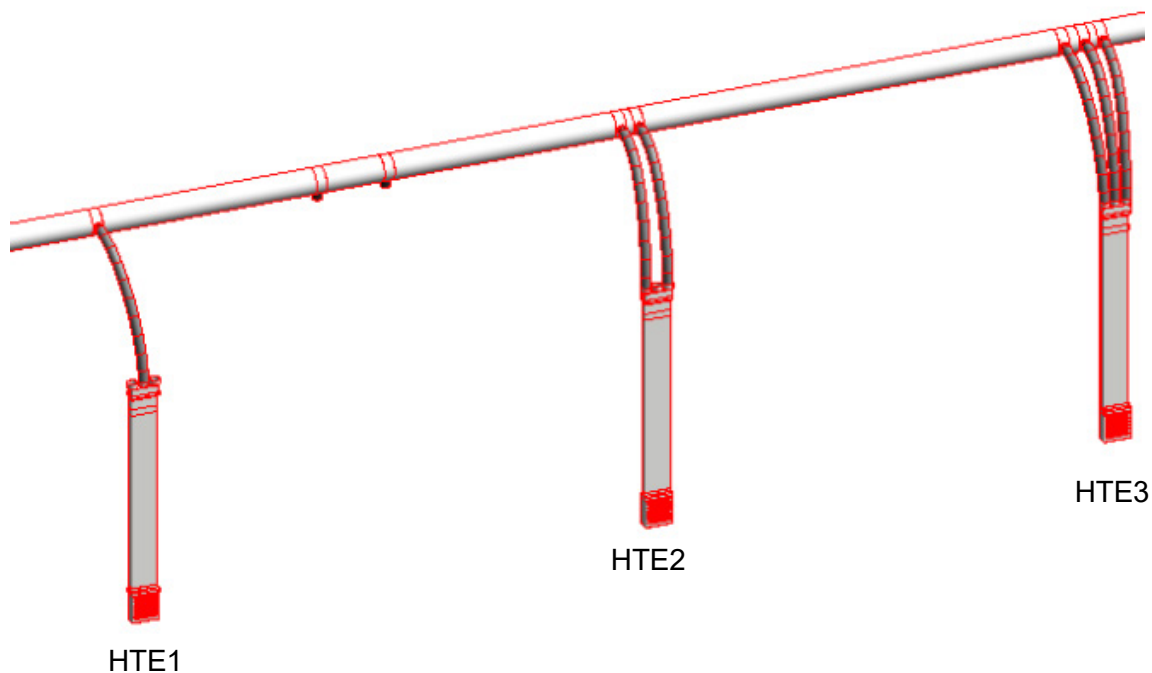
Haven HTE1/2/3 Revit Model Features

1. The HTE Revit models enclosed comprise of two separate models to be used in conjunction with each other.
 - a. The main extract ducting stack
Filename: **Nuaire_IfcAirTerminal_Hte2.rfa**
Classed as 'Air Terminal' within Revit
 - b. The semi-rigid ducting connector for your main ducting run.
Filename: **Nuaire_IfcDuctFittingType_Haven_Duct_Connector.rfa**
This is classed as a duct fitting within Revit.

If using the HTE1 variant then 1x duct connector must be used with each main stack.
If using the HTE2 variant then 2x duct connectors must be used with each main stack.
If using the HTE3 variant then 3x duct connectors must be used with each main stack.

The kits are supplied with 1m of 75 semi-rigid radial duct per duct connector.

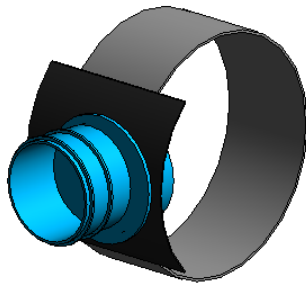
The main stack and the appropriate number of duct connectors must be connected by yourself in the Revit project environment using 75mm semi-rigid ducting.



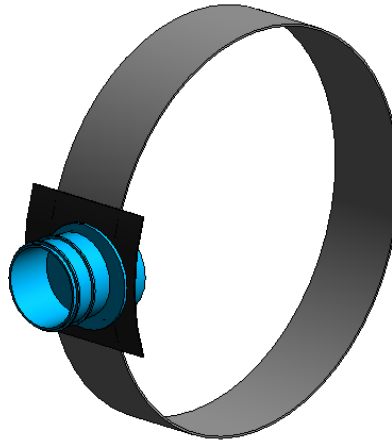
...continued on next page

2. The duct connector model will act like a regular tee-piece duct fitting in the Revit project. A small 'phantom' length of ducting is shown on the duct connector model (see the grey 'ring' item below) simply to host the duct connection objects, but this length of duct will not be present in the physical item. The real connectors are tapped directly into your main ducting.
- The size of this main duct must match your main ducting run and can be changed via the '**Main Duct Diameter**' parameter in the model's Properties window under the '**Dimensions**' rollout.

Dimensions	
Main Duct Diameter	200.0



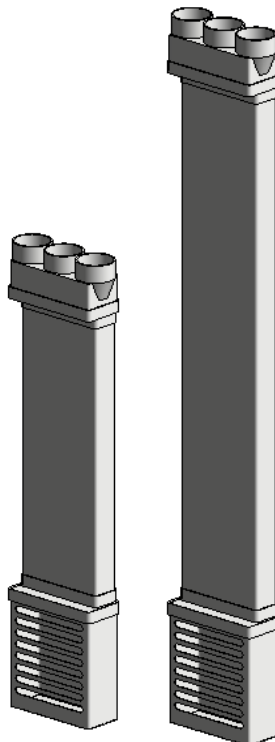
Dimensions	
Main Duct Diameter	400.0



3. The height of the main ducting stack can be manually adjusted via the '**Overall Height**' parameter in the model's Properties window under the '**Dimensions**' rollout. This value relates to the entire height of the stack from the floor level up to the very top of the 3-way radial connector on the top. In normal circumstances the 3-way radial connector will be installed above ceiling level.

Due to the physical components included, the kit allows for an overall height of between 422mm and 3374mm. Values entered outside of these limits will be ignored and the closest limit will be used in its place.

Dimensions	
Overall Height	1000.0



Dimensions	
Overall Height	1500.0