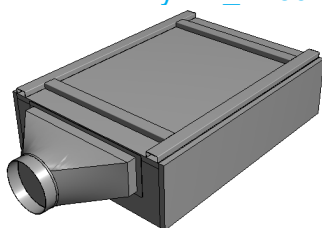


**NOTE 1:** This Hybrid Revit model has the ducting transition piece in the Hybrid ducting kit already in place on the end of the unit and therefore this model is for use only in a ducted installation. If the unit is being used in a standard, non-ducted installation please use the appropriate non-ducted model available on our website.

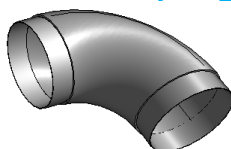
**NOTE 2:** This zip file contains the Hybrid unit itself plus all the models available in the Hybrid ducting kit apart from the 3m length of circular spiral ducting. You should use the ducting system within Revit to connect the pieces together and ensure the system is working correctly.

1. The zip file contains the following:

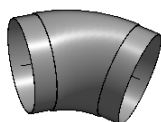
- 1x Hybrid size 130 + ducting transition piece  
Filename: [hybrid\\_H130-D.rfa](#)



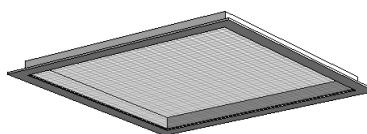
- 1x 90° Ø250mm bend  
Filename: [hybrid\\_90deg\\_elbow.rfa](#)



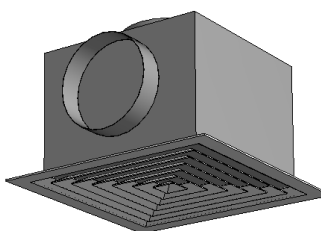
- 1x 45° Ø250mm bend  
Filename: [hybrid\\_45deg\\_elbow.rfa](#)



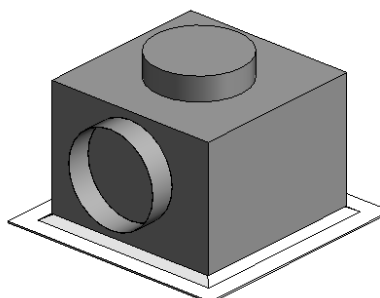
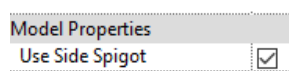
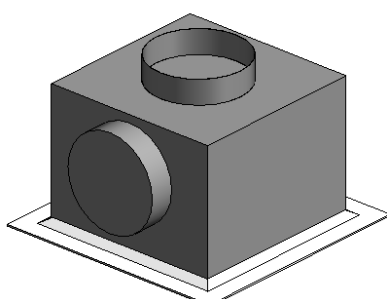
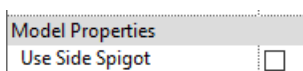
- 1x Egg-crate grille  
Filename: [hybrid\\_eggcrate\\_grille.rfa](#)



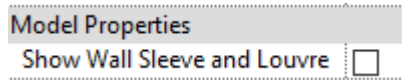
- 1x 4-way diffuser + ceiling plenum  
Filename: [hybrid\\_diffuser\\_and\\_plenum.rfa](#)



2. The diffuser and ceiling plenum model has the option (found in the '**Model Properties**' section of the model's properties window), to swap the duct connection position between the top spigot and side spigot as per the real object. Ticking "Use Side Spigot" will perform this change for you.



3. The hybrid unit model has the option (found in the 'Model Properties' roll out in the model's Properties window) to add on the matching wall sleeve (code: XB-H130-WS) and external weather louvre (code: XB-H130-L).



Ticking “**Show Wall sleeve and Louvre**” will make these parts appear on the model.

