

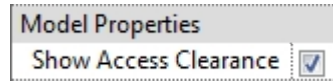


MRXBOX*-LP1

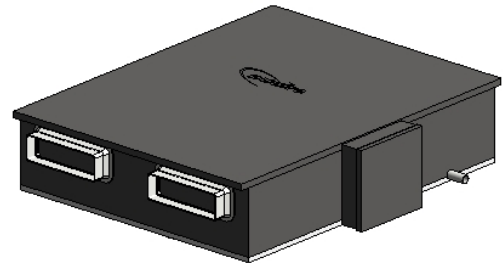
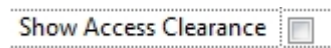
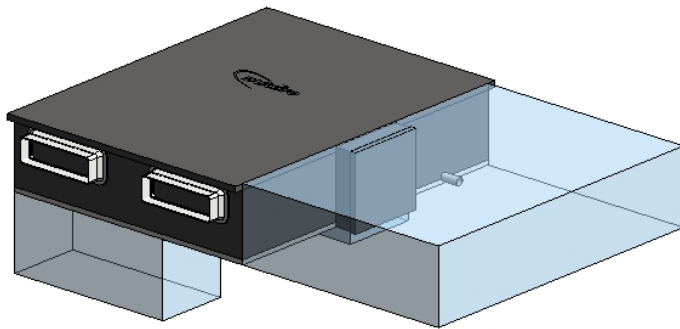
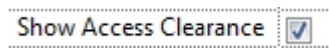
Revit Model Features

1. The model uses a type catalogue so all variants of the MRXBOX*-LP1 range can be inserted using the same .rfa file (see Read Me file attached for further info)

The mrxbox-lp1.rfa model attached includes the following options in the Model Properties category in the Properties window



2. **'Show Access Clearance'** allows you to show or hide the access clearance transparent area of the model. This clearance area will still affect collision detection when turned off.



3. If the model is inserted into the project without using the correct procedure then you will be alerted via a red box and 'DO NOT USE' wording around the model. The model code will also show this same message in the schedules. Please then refer to the additional 'Please read Me File' packaged with this family for the correct insertion procedure.

