

Neptune Size 55

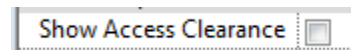
Revit Model Features

These models use type catalogues so all variants of the size 55 Neptune AHU range that use the same heating/cooling coil combination can be inserted using the same .rfa file (see Read Me file attached for further info).

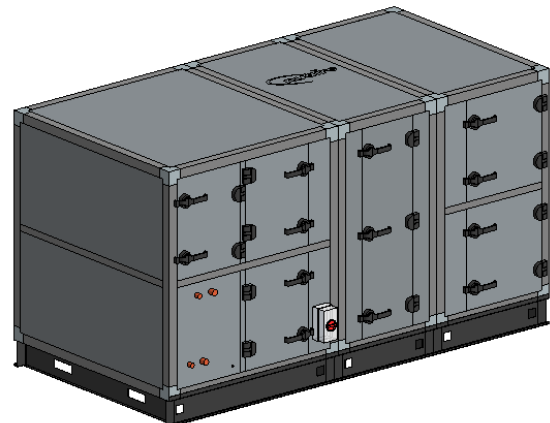
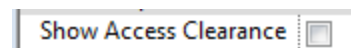
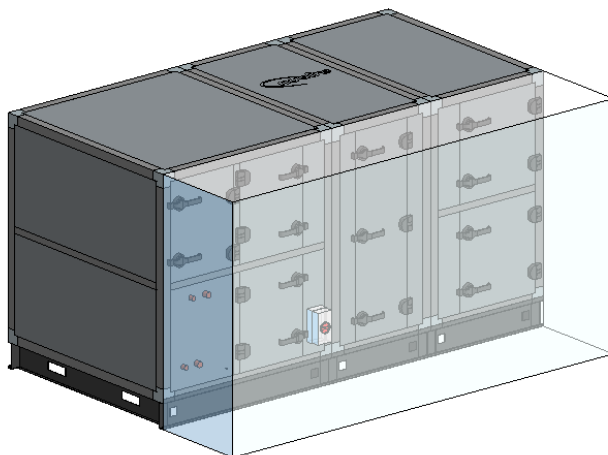
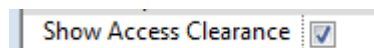
The file name relates directly to that of the item code of the unit i.e. **N55T/LX/ES-L** and the variants included are as follows:

Code	Type of Coil				
	Heating		Cooling		
	LPHW	None	Chilled Water	None	Reverse Cycle DX (No Condenser)
N55-LC	■		■		
N55-LN	■			■	
N55-LX	■				■
N55-NC		■	■		
N55-NN		■		■	
N55-NX		■			■

The N55-** models included have the following options in the Model Properties Category in the Properties Window



1. 'Show Access Clearance' allows you to show or hide the access clearance transparent area of the model. Please note that the access clearance area will still affect the collision detection even if turned off).



Continued on next page...

2. If the model is inserted into the project without using the correct procedure then you will be alerted via a red box and '**ERROR**' wording around the model. The model code will also show this same message in the schedules. Please then refer to the additional 'Please Read Me File' packaged with this family for the correct insertion procedure.

