

These models use type catalogues so all variants of the XBC10-H range, when utilising the same heating coil option, can be inserted using the same .rfa file.
See the Read Me file attached for further info.

XBC10-H-L.rfa holds all the **L**PHW heater versions on the unit e.g. XBC10-H-**L**CO.
XBC10-H-E.rfa holds all the **e**lectric heater versions on the unit e.g. XBC10-H-**E**AT-R.
XBC10-H-N.rfa holds all the **n**o heater versions on the unit e.g. XBC10-H-**N**ESBA.

The XBC10-H-*.rfa models included each have the following options in the Model Properties category in the Properties window

Model Properties	
Discharge Silencer<Mecha...	Silencer : XBC15-HS-MS10 ...
Supply Silencer<Mechanic...	Silencer : XBC15-HS-MS16 ...
Intake Silencer<Mechanic...	Silencer : none
Extract Silencer<Mechanic...	Silencer : XBC15-HE-MS12 ...
Roof	<input type="checkbox"/>
Intake Connection Option 2	<input type="checkbox"/>
Extract Connection Option 2	<input type="checkbox"/>
Show Access Clearance	<input checked="" type="checkbox"/>

1. 'Discharge Silencer' etc. are drop down boxes that allow you to choose which matched silencers to use. The choice of silencer lengths are: MS10 (1050mm), MS12 (1250mm) & MS16 (1600mm).

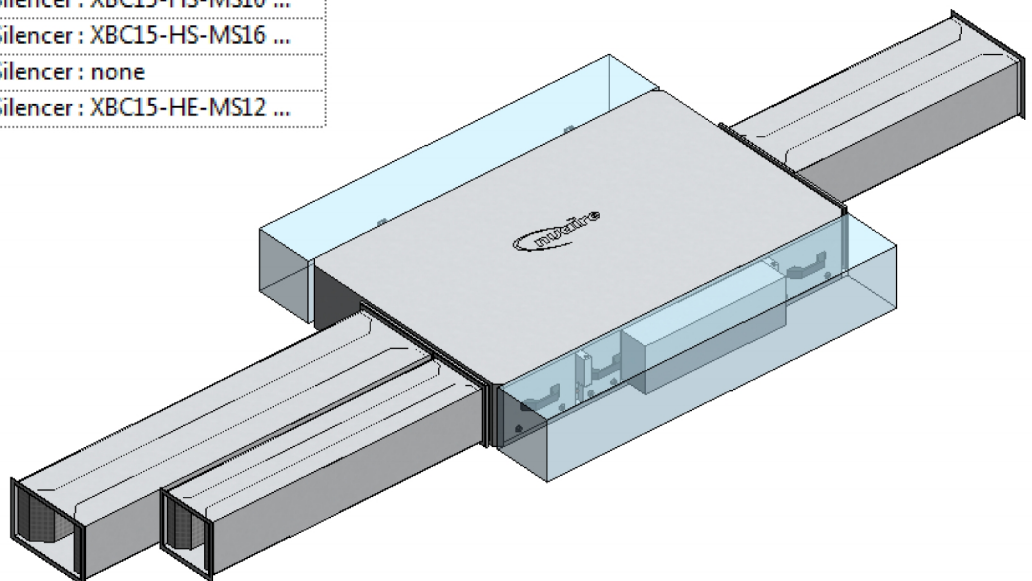
The HE/HS part of the code refers to which connection they are designed for:

HE - This silencer is suitable for the smaller extract and intake connections on the sides.

HS – This silencer is suitable for the larger supply and discharge connections in the centre.

Choosing an option that doesn't match the connection will not work. The silencer will therefore not be shown on the unit, or scheduled.

Model Properties	
Discharge Silencer<Mecha...	Silencer : XBC15-HS-MS10 ...
Supply Silencer<Mechanic...	Silencer : XBC15-HS-MS16 ...
Intake Silencer<Mechanic...	Silencer : none
Extract Silencer<Mechanic...	Silencer : XBC15-HE-MS12 ...

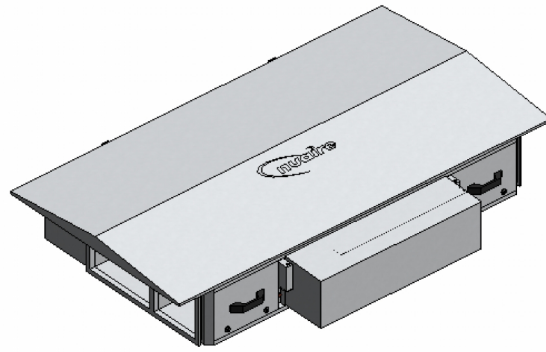


2. Ticking '**Roof**' will add the weatherproof roof and cover for the controls (XBC15-H-WP) if used.

Roof ☐



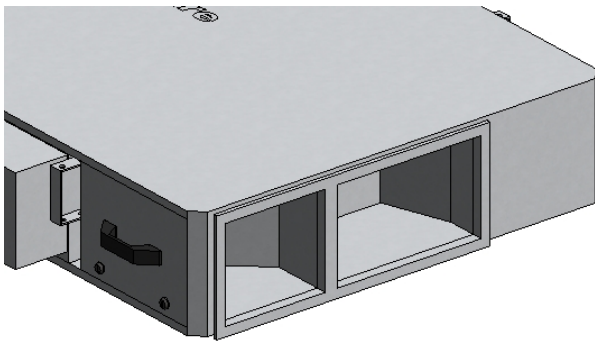
Roof ☒



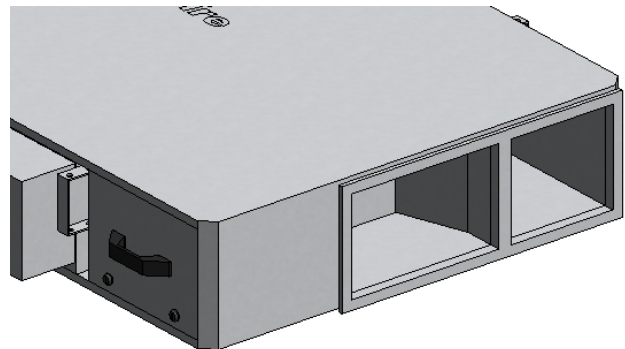
3. The XBC10-H units comes with a choice of left or right handed duct connections that are to be chosen on site by the ducting contractor.

'**Intake Connection Option 2**' and '**Extract Connection Option 2**' will switch the connection on the Revit model to the other side as required.

Intake Connection Option 2 ☐

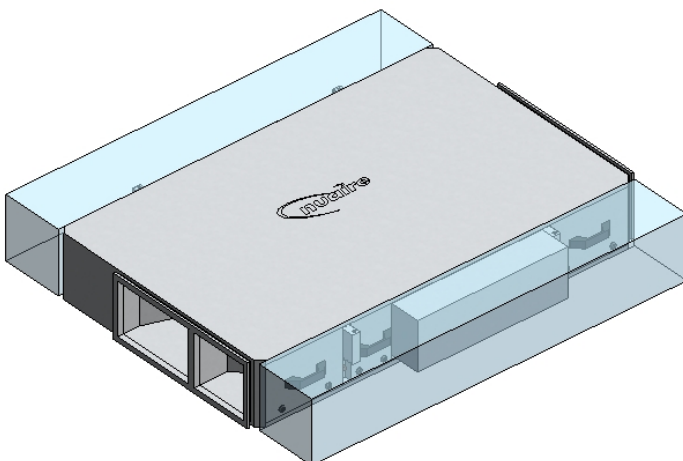


Intake Connection Option 2 ☒



4. '**Show Access Clearance**' allows you to show or hide the access clearance transparent area of the model.

Show Access Clearance ☒



Show Access Clearance ☐

