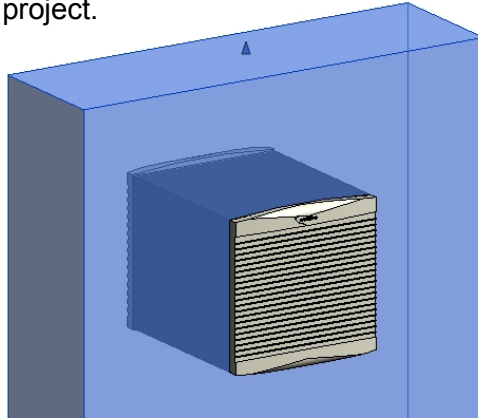


nuaire XS Revit Model Features

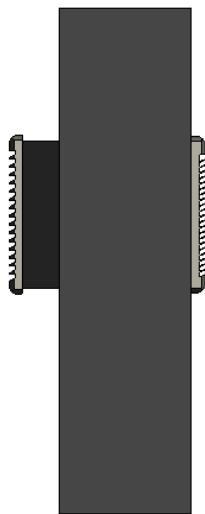
Wall Mounted - XS*WA

1. These models are face-based models and must be inserted onto an existing **interior** face or work plane in the project.

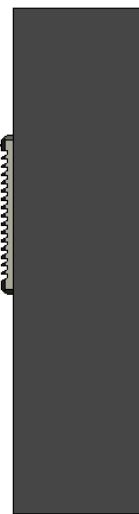


2. The 'Wall Thickness' dimension is adjustable and will shorten or elongate the fan's wall sleeve according to your specified wall thickness. The maximum wall thickness allowed is 370mm and any value entered above this will be ignored by the model.

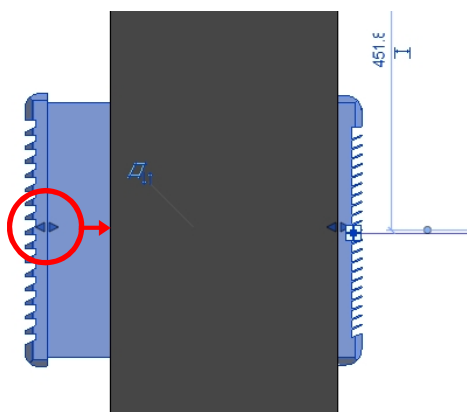
Dimensions	
Wall Thickness	370.0



Dimensions	
Wall Thickness	290.0

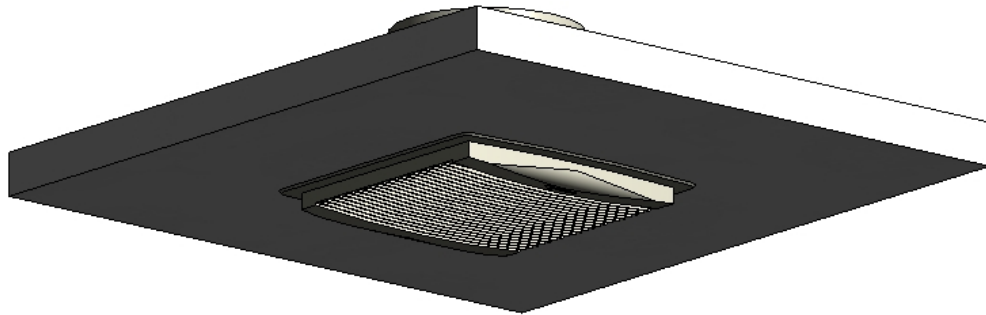


The external louvre can also be manually dragged to the external face of the wall when in top or side elevations if preferred.



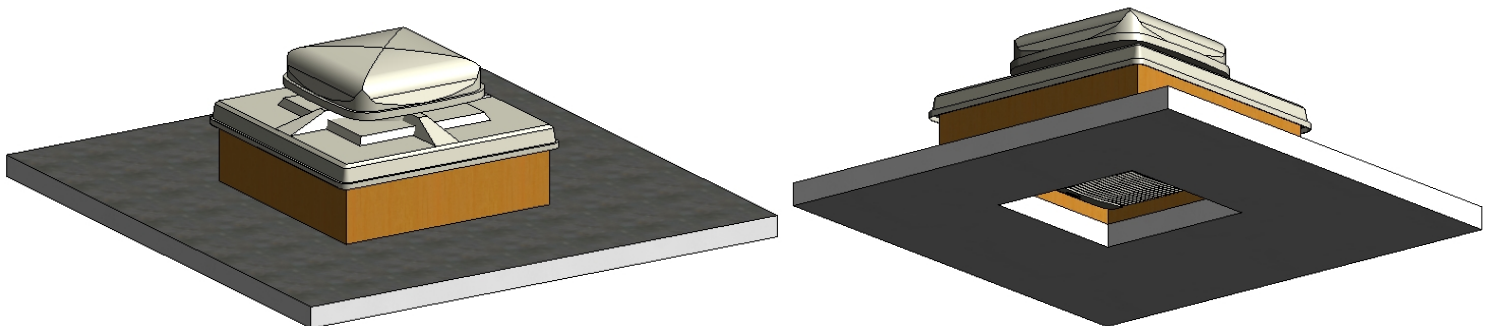
Ceiling Mounted - XS*CL

1. These models are face-based models and must be inserted onto an existing interior face or work plane in the project



Flat Roof Mounted - XS*FR

1. This fan is designed to be curb mounted and therefore the model is face-based and must be inserted onto an existing upstand or other suitable surface.



Pitched Roof Mounted - XS*PR

1. This fan is plate-mounted and therefore the model is face-based and must be inserted onto the external face of existing roof or other suitable surface.

