

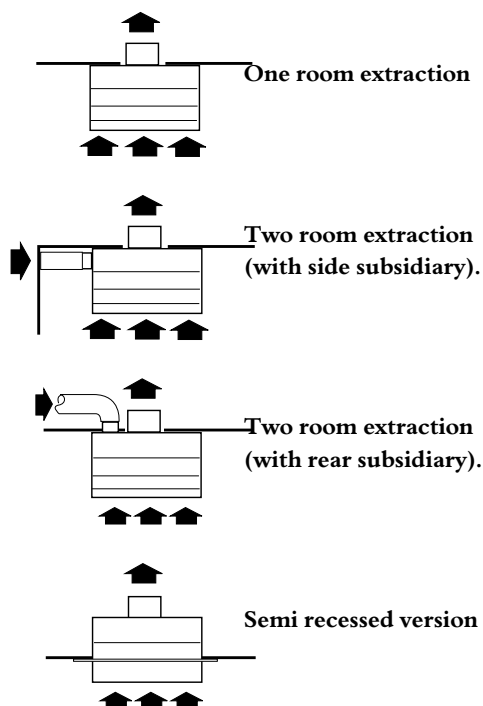
Fig. 1. General view of unit.

Introduction

NuAire's OPUS 30 & 60 range of surface mounted domestic extract fans are designed to be installed in the area to be ventilated, for example bathrooms and WC compartments, but are ideally suited for stores, drying rooms, cupboards, etc. The fans discharge air through 100mm. dia. outlet spigot and have provision for adding a 50mm dia. subsidiary inlet to extract air from a second room.

Typical arrangements

Surface mounting, wall or ceiling



Contents

Page

Introduction	1
Arrangements and Codes	1
Installation	2
Dimensions & Ancillaries	3
Maintenance	3
Electrical Diagrams	4
Certification	5

IMPORTANT WARNING

Installation and servicing MUST be carried out by electrically qualified personnel.
The unit MUST BE TOTALLY ISOLATED from the electrical supply before removing covers.
NOTE internal input socket will be exposed and MAY BE LIVE with the fan module removed.
See 'ISOLATION' notes.

Units are available with one or two fans and in two duty sizes 32 l/s and 61 l/s.

Inlet is through filters located on the front cover of the unit which can easily be removed for cleaning.

Units can be fitted with a selection of controls which enable them to be linked to light switches, either directly or through run-on circuits.

Coding

- B** Basic unit with single fan.
- BS** Single fan unit incorporating a run-on circuit.
- 2BAS** Twin unit incorporating both run-on and fan failure detection/change over circuits.
- BX** Single fan unit providing continuous low duty running with boost when room light is switched on. (Opus 30 only)

Installation

- a) It is assumed that a solid non reverberant mounting position has been selected, and the necessary passages for duct work, from outlet spigot and to subsidiary inlet spigot (if a second room is to be ventilated) as well as the electrical connection prepared. It is also assumed that compatible duct work is already installed.
- b) Note that the front cover, fixing screws and filters are bagged separately. Release the spring clips retaining the fan module and then withdraw the fan module from the case.

If a second room is to be served, remove the appropriate weakened area from the case and working from the inside fit the subsidiary inlet spigot by passing it through the case and turning quarter of a turn to lock. Fig. 3a and 3b. Remove the relevant cable entry in the back of casing.

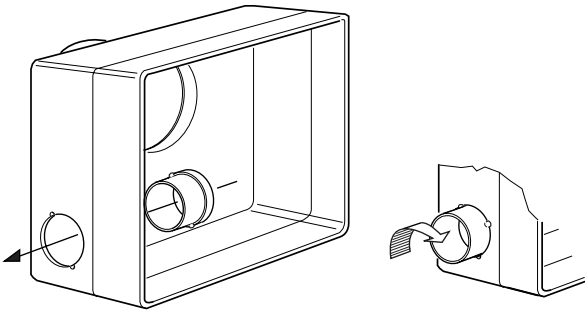


Fig. 3a. Fitting a subsidiary spigot

Fig. 3b

- c) Position the case in the mounting position, connect to the ductwork and feed the supply cable through the cable entry. Fig. 4.

Secure with three No. 8 woodscrews, drilling and plugging the mounting surface if necessary. Connect the wiring to the internal terminal block/socket.

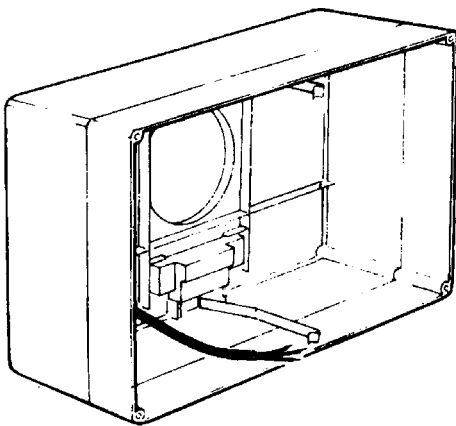


Fig. 4. Cable entry

- d) Fit the fan module to the case, mating it's plug fully with the internal socket. Lock with the spring clips. Fig. 5.
- e) Fit the cover and fix using the four screws supplied. Fit the two filters into the rebates on the front cover. Test/run the unit.

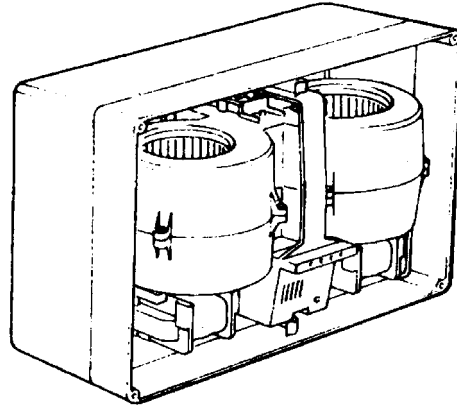
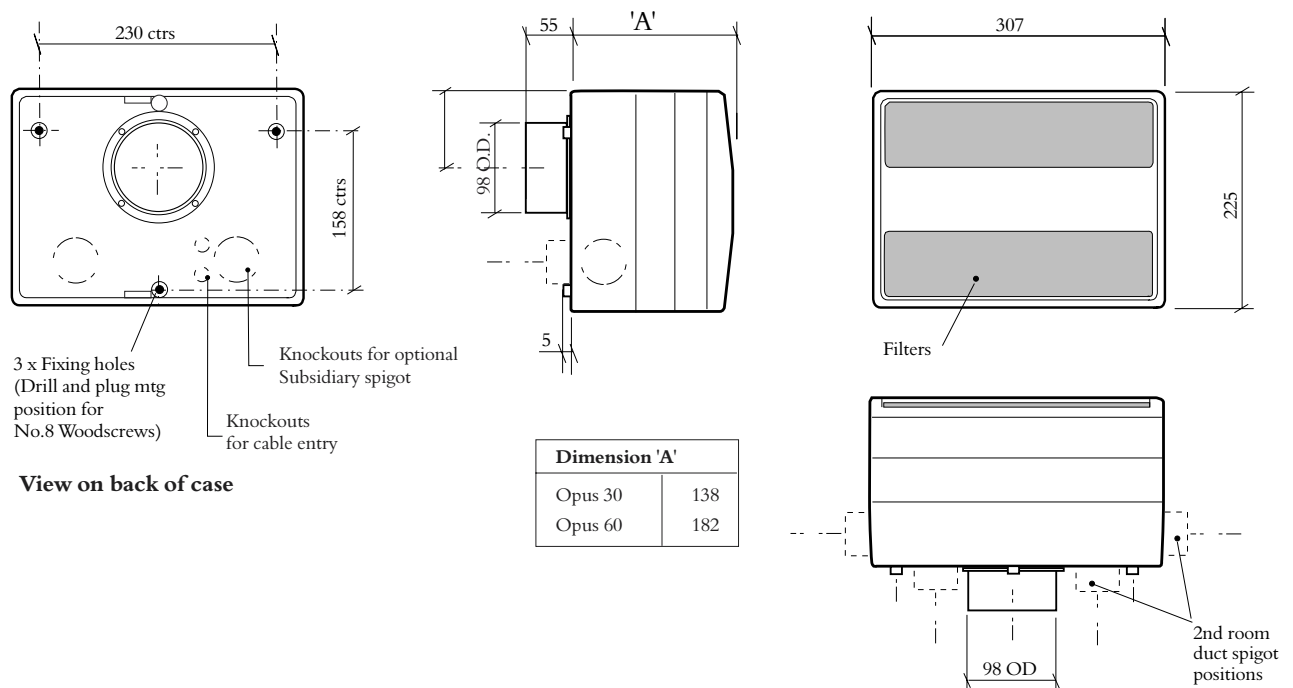


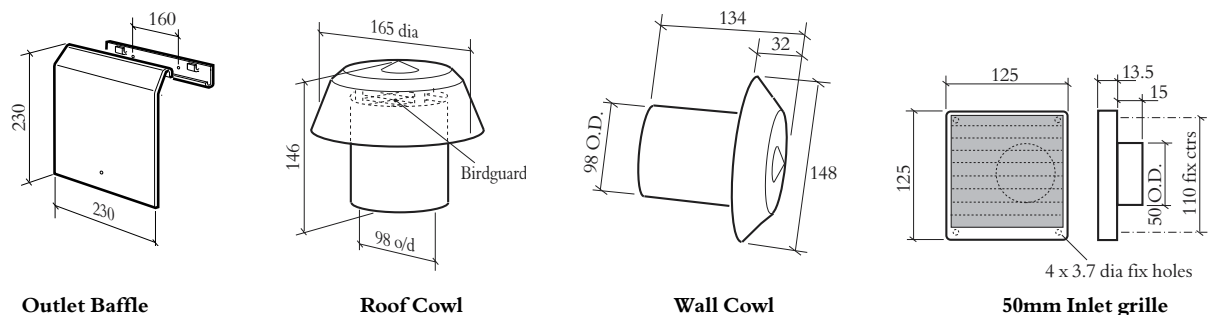
Fig. 5. Fan module in position.

Installation and Maintenance OPUS (B range)

Dimensions



Optional ancillaries



Maintenance

General

It is inevitable that some dust, fluff etc. will pass through the filters, and which, if allowed, will build up internally on motors and impellers, shortening the life of the unit and, in severe cases, leading to overheating of the motors.

Consequently, it is strongly recommended that all units are inspected and cleaned every six months. To clean the filters, remove them from the unit, wash in tepid water to which a little mild detergent has been added. Shake out excess water and allow to dry naturally. Replace when dry.

Isolation

Ensure that the unit is totally isolated from the electrical supply. This is particularly important when dealing with a run-on circuit or a continuously running fan unit with boost when the room light is switched on (letter X in the Model Code) AS THE INPUT SOCKET TERMINALS WITHIN THESE UNITS REMAIN LIVE, EVEN WHEN THE ROOM LIGHT OR OTHER ACTUATING SWITCH IS OFF. Take care therefore when working within the case with the fan module removed.

Procedure

At all times, take care not to damage, distort or disturb the balance of the impellers. Remove the cover and then the fan module after releasing the spring clips. Inspect all parts. Using a brush or dry cloth clean the backplate. Lightly brush away dust and dirt from the fan module. If stubborn, carefully remove with a suitable blade or scraper. Wash the cover in warm soapy water. Dry thoroughly. Refit the fan module, followed by the cover. Test/run the unit.

Adjusting the run-on timer

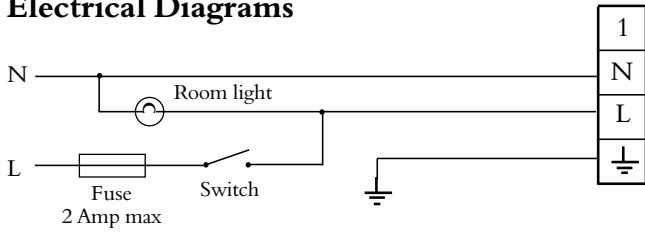
Remove cover. Locate the Time Delay Adjustment at the plastic box integral with the fan module. Re-set against the graduated scale. Re-fit the cover.

Warranty

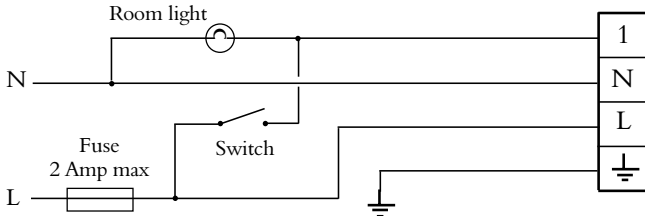
The plastic control box integral with the fan assembly is a sealed component. Breaking the plastic sealing tie will invalidate the guarantee. The unit is guaranteed for a period of 3 years.

Installation and Maintenance OPUS (B range)

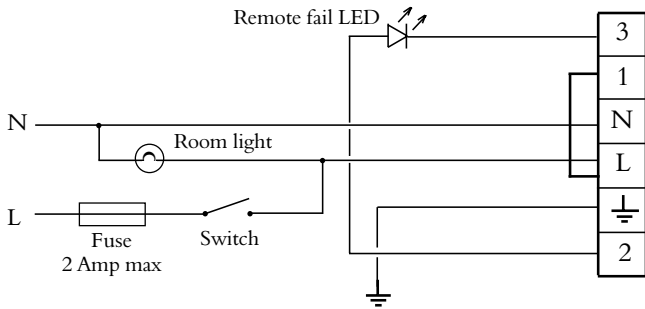
Electrical Diagrams



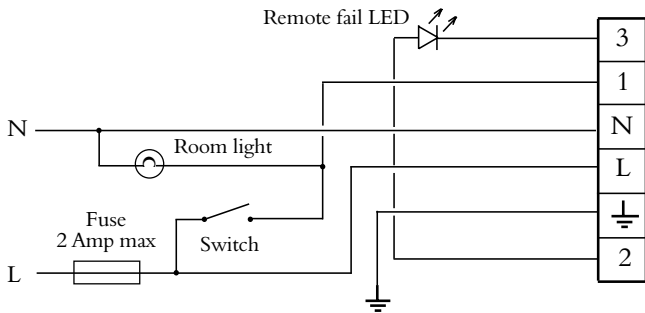
B Unit ventilating one room.



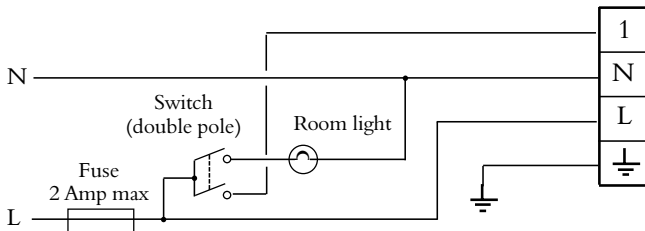
BS Unit ventilating one room. (using run on circuit).



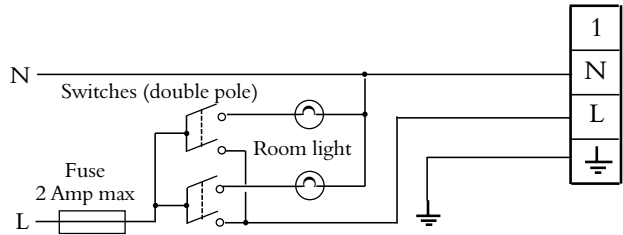
2BAS Unit ventilating one room, (no run on timer).



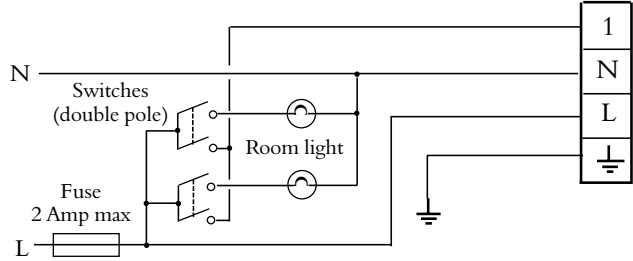
2BAS Unit ventilating one room (using run on circuit).



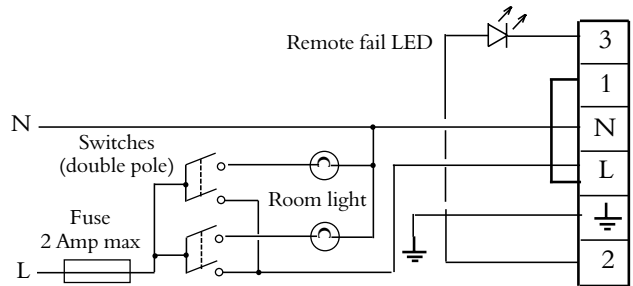
BX Continuous run with boost (Opus 30).



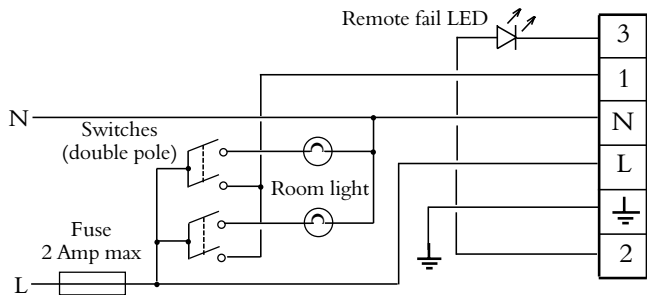
B Unit ventilating two rooms.



BS Unit ventilating two rooms (using run on circuit).



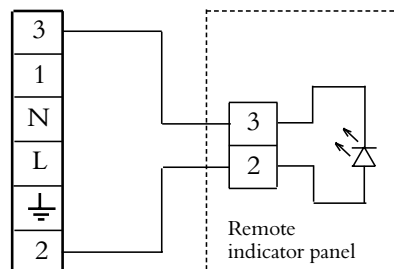
2BAS Unit ventilating two rooms (no run on timer).



2BAS Unit ventilating two rooms (using run on circuit).

Model	Opus 30			Opus 60	
	B	BX on boost	2BAS	B	2BAS
Unit input power (watts)	26	26	26	58	58
Full load running current (amps)	0.170	0.170	0.170	0.190	0.190
*Starting current (amps)	0.215	0.215	0.215	0.280	0.280

Fan terminal block



Wiring details for remote indicator.

* On starting both fans run together

NUAIRE

CE DECLARATION OF CONFORMITY

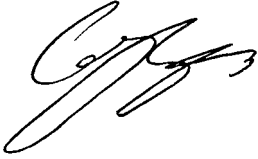

NuAire Limited,
Western Industrial Estate, Caerphilly, Mid
Glamorgan, CF83 1XH.
United Kingdom.
Telephone: 02920 885911
Fax: 02920 887033
Email: info @ nuaire.co.uk
www.nuaire.co.uk

MARCH 2000

*We declare that the machine named below
conforms to the requirements of EC Council Directives
relating to Electromagnetic Compatibility and
Safety of Electrical Equipment.*

Designation of machinery :-	OPUS EXTRACT FANS
Machinery Types :-	OPUS 30, OPUS60 ('B' RANGE)
Relevant EC Council Directives :-	89/336/EEC, 92/31/EEC (EMC) 73/23/EEC, 93/68/EEC (Low Voltage Directive)
Applied Harmonised Standards :-	E50081-1, EN50082-1, EN60204-1 EN60335-2-80
Basis of Self Attestation :-	Quality Assurance to BS EN ISO 9001 BSI Registered Firm Certificate No. FM 149

Signature of manufacture representatives :-

	Name:	Position:	Date:
1)	 C. Biggs	Technical Director	3. 3. 00
2)	 W. Glover	Manufacturing Director	3. 3. 00

Service

As a manufacturer NuAire provides you with factory trained Service Engineers.

Our Engineers are supported by a comprehensive range of spare parts 'off the shelf'.

If you are an industrial or commercial user, you may be interested in details of NuAire's regular maintenance Service Contracts. This is a worthwhile service that helps you get the most from our products.

Our Service Department will be happy to give you more information.

Please telephone: 02920 885991

Controls Application Service (CAS)

A team of Engineers and technicians is available to provide pre and post order support.

We are on hand to provide help and advice from the most basic use of any NuAire equipment to the more complex applications, maximising on the versatility of our SMART and NetLink control products.

Telephone: 02920 858585

Facsimile: 02920 858586

3 Year Warranty

The three year warranty starts from the date of delivery and includes parts and labour for the first year.

The labour element is subject to full, free and safe access to the equipment as recommended by the CDM regulations.

The remaining two years covers replacement parts only.

NOTE:

Installation & Maintenance of the equipment must be as directed in the instructions provided with the unit.

Technical or commercial considerations may, from time to time, make it necessary to alter the design, performance and dimensions of equipment and the right is reserved to make such changes without prior notice.

NUAIRE

**Western Industrial Estate, Caerphilly,
Mid Glam CF83 1XH United Kingdom.
Telephone: 02920 885911 Facsimile: 02920 887033,
Email@nuaire.co.uk
www.nuaire.co.uk**

NB

If you have any comments or queries on any of our products or services please write to the Product Information Manager at the main address opposite.