

NUAIRE

INSTALLATION

Neonaire NEGB Light & Bend kit

NUAIRE

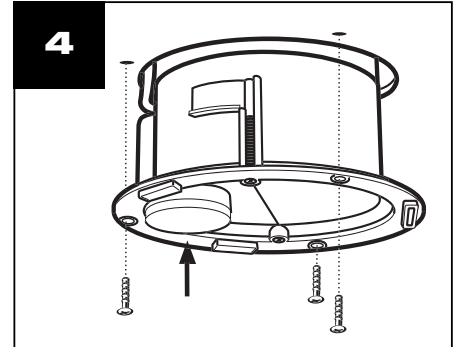
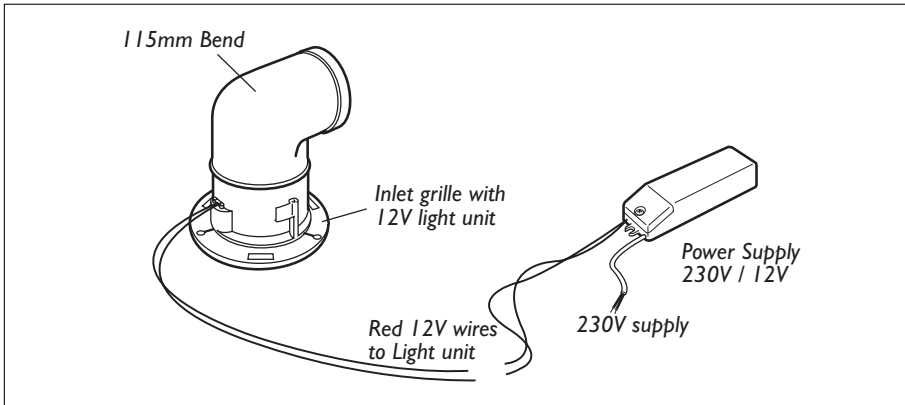
NuAire Limited
Western Industrial Estate
Caerphilly, United Kingdom
CF83 1XH
Telephone: 029 2088 5911
Facsimile: 029 2088 7033
Email: info@nuaire.co.uk
www.nuaire.co.uk



The EMC directive: 89/336/EEC
with modification 92/31/EEC
The low voltage directive 73/23/EEC

Leaflet 671130

SEPTEMBER 2001



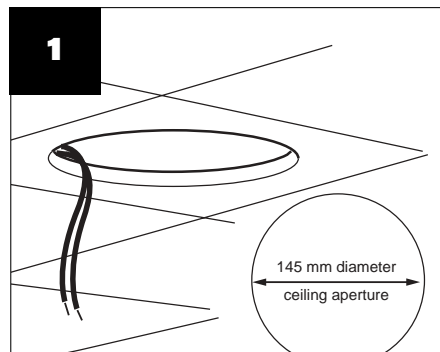
Remove the finisher. Mark and plug three holes using the three fixing holes on the light unit. Secure by using three No. 6 countersunk screws

General Notes

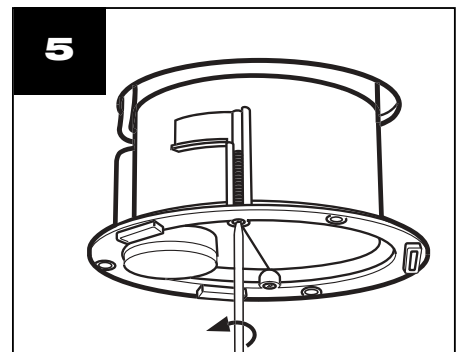
The unit should not be sited where it would be subject to a direct source of heat in excess of 40°C.

Once fitted into ceiling void or loft space, do not cover light body or 12V power supply unit with any insulating materials.

Minimum void height when fitting into ceiling space and minimum distance for light is 200mm.



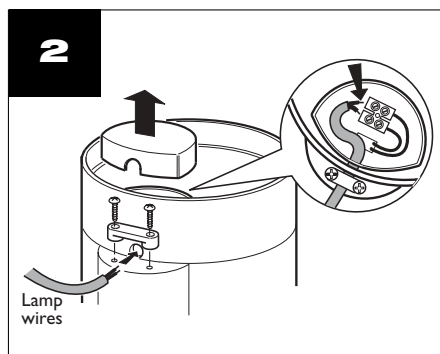
Cut a hole in the ceiling to the size indicated and thread through the two red 12V Power Supply unit cables.



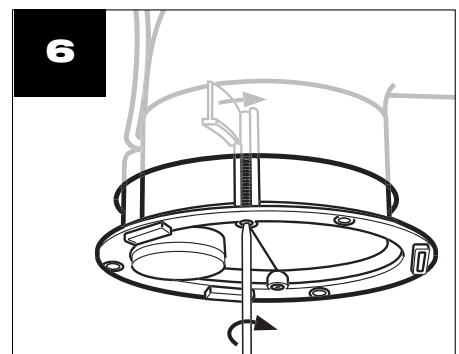
Alternatively, attach the fixing fingers to the light unit using long screws provided

ISOLATION

Note that the unit must be provided with a means of isolation (by others) for maintenance purposes etc. An RCD trip device must be included between the power supply unit and the mains if the unit is fitted in zone I as defined in IEE regulations. Refer to Wiring Instructions overleaf.



To wire in the light, lift off the cover. Loosen the clamp on the case side. Bring in the two red 12V cables and wire as shown

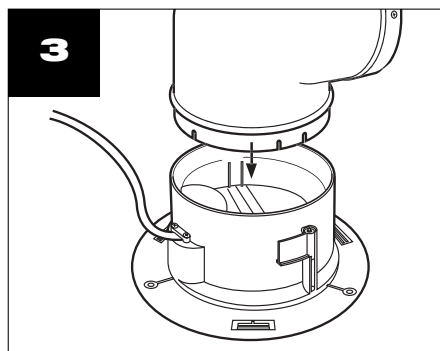


Push the light unit through the ceiling and twist the fingers outwards

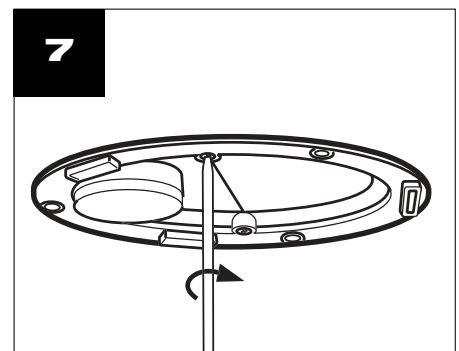
Installation

IMPORTANT

The installation must be carried out by qualified personnel in accordance with the appropriate authority and conforming to all statutory and governing regulations eg. IEE, CIBSE, COHSE etc.

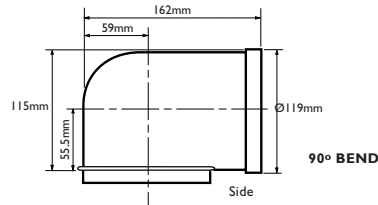
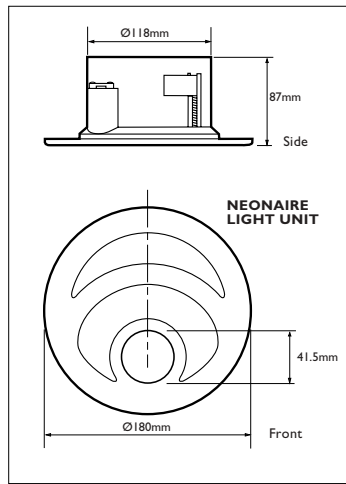


Push the light unit to the 90° bend and click to fit.



Then tighten the fixing fingers against the ceiling (do not overtighten). To fit the lamp bulb, see details overleaf. Clip on the internal finisher.

DIMENSIONS



WIRING

WARNING!

Isolate electricity supply before starting work.

- The equipment must be wired and installed in accordance with IEE or local regulations by a suitably qualified electrician.
- The light unit and power supply must be connected to the double pole isolating switch having a contact separation of at least 3mm at each pole and fitted with a 3A fuse.
- The power supply unit must not be sited within reach of a person using a bath or shower nor within a shower cubicle/ enclosure.
- The power supply unit is supplied with flying leads. The two red 12V leads should be connected directly to the lamp terminals within the lamp body (see overleaf).
- **The mains cable from the Power supply unit should be connected via an RCD protection device to a mains voltage junction box or similar (supplied by others). See wiring diagram.**
- Connect only one light unit per Power supply unit.

Specifications

Light unit: 12V 1ph 50Hz. IP44

Cable size: 1.00mm² max. (flexible only).

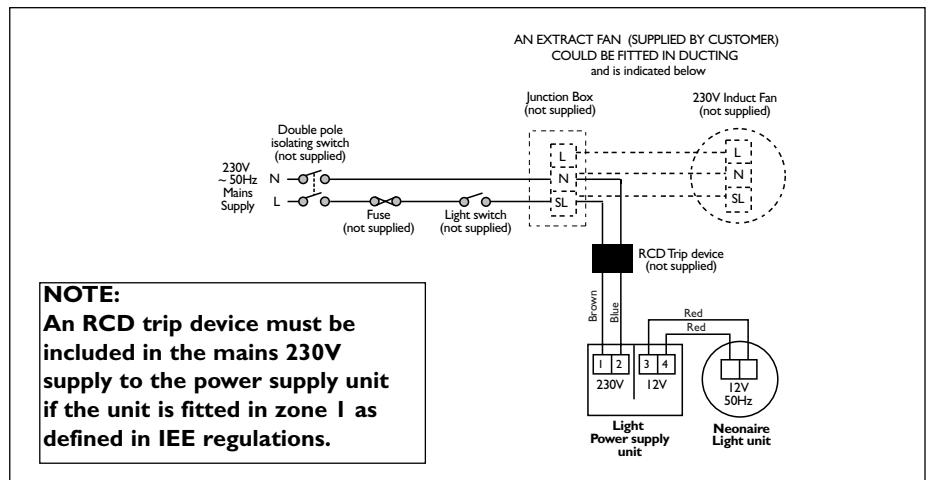
Lamp: 12V dichroic rated at 20W
36° beam angle.
GE Lighting type M269

Lamp replacement

WARNING!

Isolate electricity supply before starting work.

- Remove the internal finisher by pulling down.
- Remove the lamp lens and old lamp by pulling down.
- Fit lamp by pushing up into the lamp holder.
- Push up lamp lens and internal finisher.



MAINTENANCE

CLEANING

Electrically isolate the unit before commencing any work. Remove the internal finisher by pulling down. Wash in warm water. The lamp body may be cleaned using a brush or damp cloth before replacing the finisher.

Service

In the event of a breakdown contact our Service Department. We will be happy to give you more information .

Telephone: 02920 858585
Facsimile: 02920 858586

3 Year Warranty

The three year warranty starts from the date of delivery and includes parts and labour for the first year.

The labour element is subject to full, free and safe access to the equipment as recommended by the CDM regulations.

The remaining two years covers replacement parts only.

NOTE:

Installation & Maintenance of the equipment must be as directed in the instructions provided with the unit.

NUAIRE
NuAire Limited

Western Industrial Estate

Caerphilly, United Kingdom CF83 1XH

Telephone: 029 2088 5911 Facsimile: 029 2088 7033

Email: info@nuaire.co.uk www.nuaire.co.uk