



# MRXBOX-CARBONFILT

Inline Carbon Filters for  
Mechanical Ventilation Systems

## Installation and Maintenance

### 1.0 Introduction

Nuaire's range of Inline Carbon Supply Filters has been specifically designed to reduce the level of airborne contaminants entering a building, in particular nitrogen dioxide (NO<sub>2</sub>). The filter unit incorporates a series of carbon filter cells and a G3 pre-filter which shall be fitted on the supply leg of ducting serving rooms and therefore does not require insulation.

### Optional Filter:

High urban PM (Particulate Matter) emissions may require an additional filter to meet air quality standards.

MRXBOX-CF-PM10

### 2.0 Performance Data

Nuaire's carbon filter unit has been independently tested by Envirocare Environmental Service and offers up to 85% efficient filtration of airborne pollutants. The unit will meet planning obligations.

### 2.1 Resistance Data

When selecting the MVHR unit please ensure that the resistance through the carbon filter has been allowed for (See fig 1).

### 2.2 Installation

As mentioned previously the carbon filter unit should be installed on the supply air side of the ducting. A ceiling bracket is incorporated into the unit. Ensure that Self Seal Connectors are used on any ducting joints that occur before the installed carbon filter unit.

Please ensure that an access panel of 525 x 950mm has been allowed for access and maintenance to the unit.

Fig 1: Air Resistance test of MRXBOX-CARBONFILT

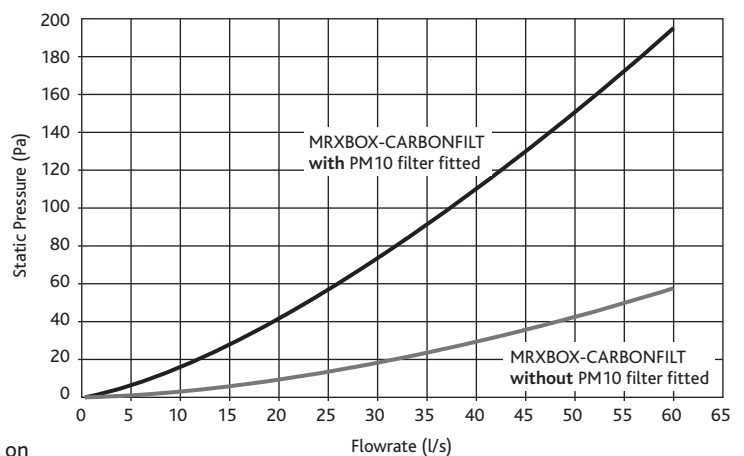
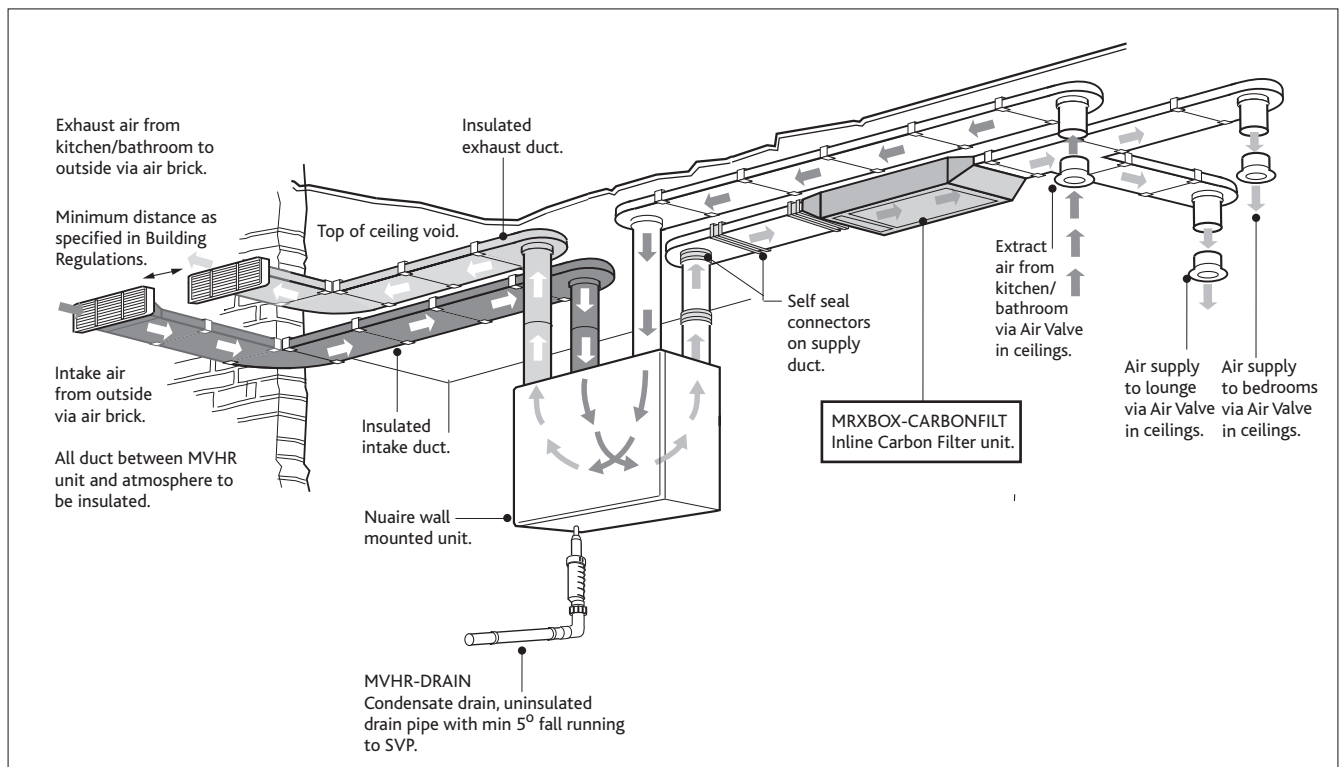
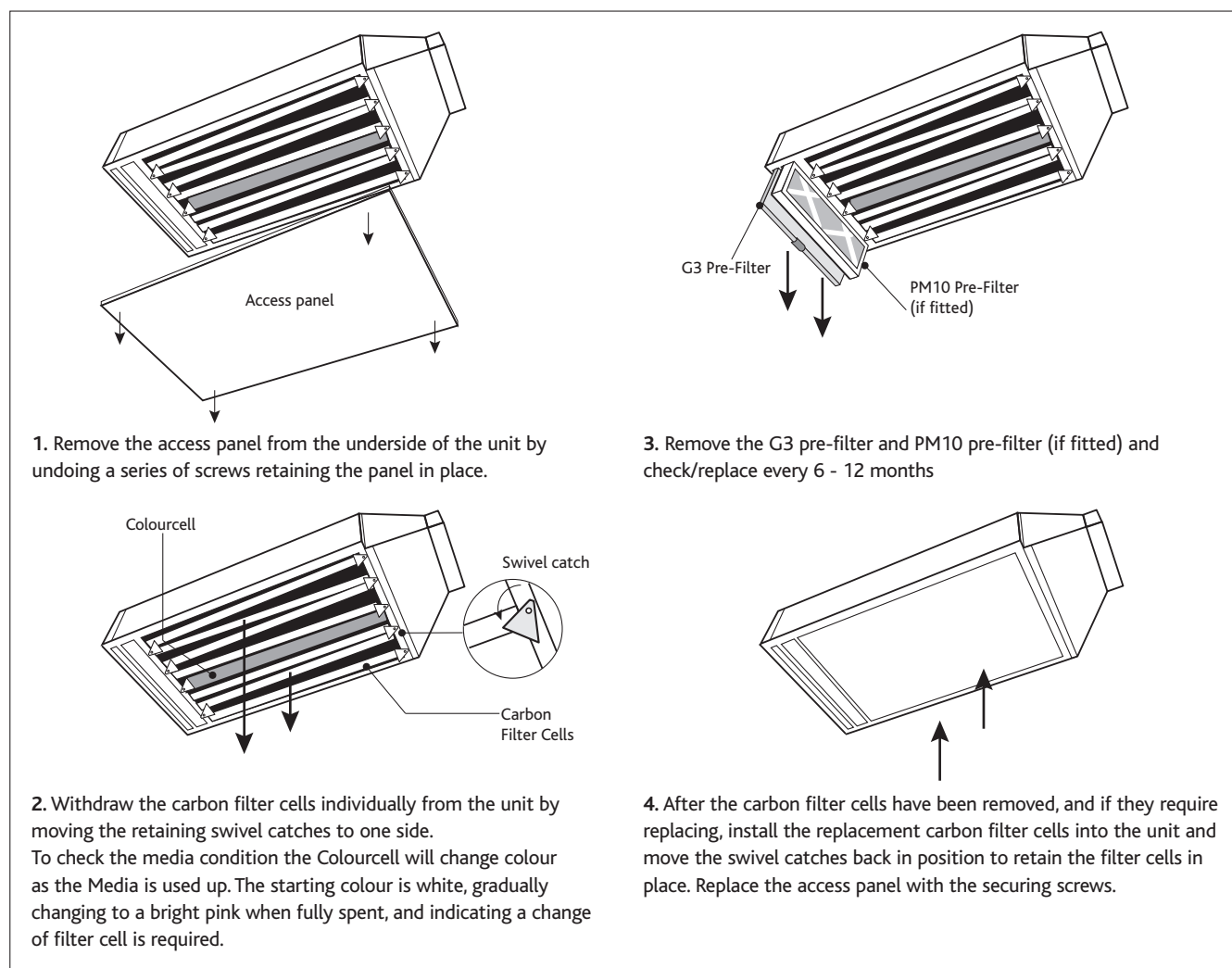


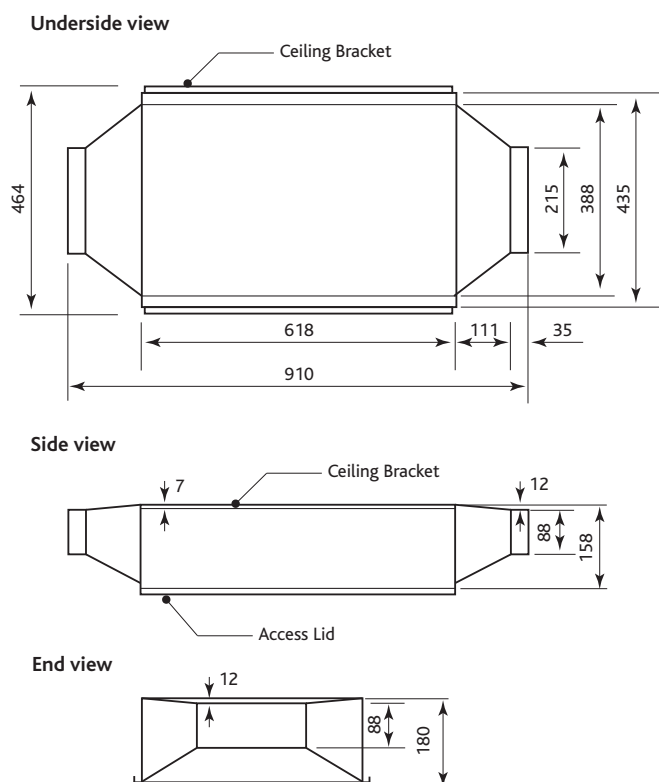
Figure 2. Typical example of a cupboard mounted MVHR unit with MRXBOX-CARBONFILT installed in the supply ducting.



### 3.0 Maintenance Figure 3. Checking the media condition.



### 4.0 Unit Dimensions (mm)



### 5.0 Replacement of Parts

Nuaire keeps an extensive stock of the following ancillaries for quick delivery:

**G3 filter replacement:** MRXBOX-CF-G3

**PM10 filter replacement:** MRXBOX-CF-PM10

**Replacement of complete filter cell:** MRXBOX-CF-CELL

### 6.0 Warranty

The 5 year warranty starts from the day of delivery and includes parts and labour for the first year and parts only for the remaining 4 years.

This warranty is void if the equipment is modified without authorisation, is incorrectly applied, misused, disassembled, or not installed, commissioned and maintained in accordance with the details contained in this manual and general good practice.

The product warranty applies to the UK mainland and in accordance with Clause 14 of our Conditions of Sale. Customers purchasing from outside of the UK should contact Nuaire International Sales office for further details.

### 7.0 After Sales Enquiries

For technical assistance or further product information, including spare parts and replacement components, please contact the After Sales Department.

**Telephone 02920 858 400**