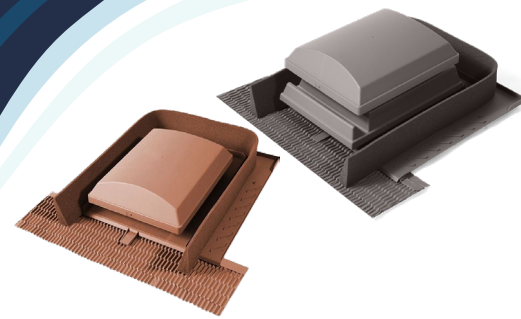


PVCTT9/13

Versa-Tile Roof Terminal Installation Manual



1.0 SAFETY INFORMATION



REFER TO INSTRUCTION MANUAL

Read and understand the installation and maintenance manual before installing, operating or maintaining this product.

1.1 IMPORTANT INFORMATION

The following minimum Personal Protective Equipment (PPE) is recommended when interacting with Nuaire product:

- Protective Steel Toed Shoes - when handling heavy objects.
- Full Finger Gloves (Marigold PU800 or equivalent) - when handling sheet metal components.
- Semi Fingerless Gloves (Marigold PU3000 3DO or equivalent) - when conducting light work on the unit requiring tactile dexterity.
- Safety Glasses - when conducting any cleaning/cutting operation or exchanging filters.
- Reusable Half Mask Respirators - when replacing filters which have been in contact with normal room or environmental air.

Nuaire would always recommend a site specific risk assessment by a competent person to determine if any additional PPE is required.

2.0 INTRODUCTION

The PVCTT9 is a universal roof vent terminal with a 125mm diameter spigot.

The PVCTT13 is a universal roof vent terminal with a 150mm diameter spigot.

Fade resistant UV stable surface treatment proven in use over 15 years.

Not suitable for use with: Plain, Clay Single Pantiles, Forticrete Centurion, Goxhill Gaelic Tiles, Double Lap or Interlocking Slates.

Suitable for roof pitches of between 20° and 60°

For pitches above or below this consult Nuaire technical services

2.1 CODE DESCRIPTION

1	2	-	3
PVCTT	9	-	GREY

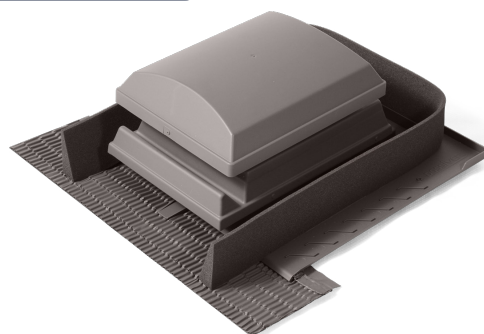
1. Range: **Versa-Tile Terminal**
2. Size: **9** = Ø125mm Spigot
13 = Ø150mm Spigot
3. Colour Option: **BROWN**
GREY
RED
REDST (Red Streak)
TERRACOTTA

2.2 COWL EXAMPLES

Fig 1: PVCTT9-TERRACOTTA



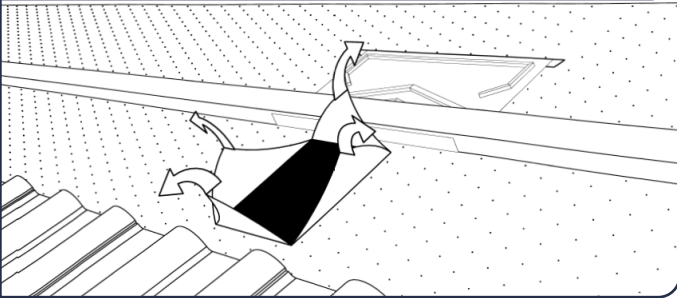
Fig 2: PVCTT13-GREY



3.0 INSTALLATION

- Decide on a suitable position for the Nuaire Vent Terminal between rafters and tiling battens.
- Lay tiles up to the course below this position.
- Cut an X in the underlay and fold flaps upwards and outwards (Fig 3).

Fig 3: Cut an X in the underlay & fold the flaps upwards



ref: PVOB004 - Issue 3, Sept 2024

- Make a slit in the underlay above the tile batten, slide the Underlay Protector under the batten and into the slit.

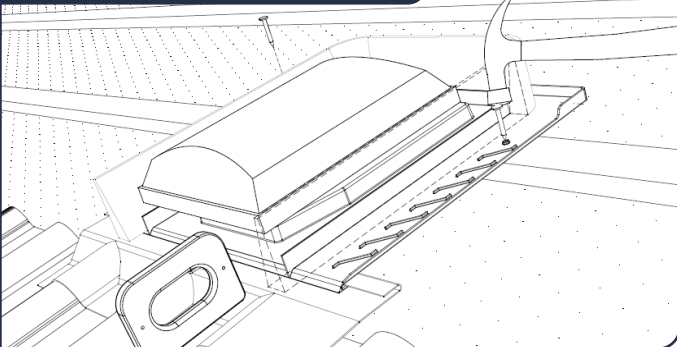
If an Extension Sleeve or Pipe Adaptor are being used, snap fit these to the Versa-Tile before fixing.

- Fit in position and nail to the batten. (Fig 4)

For profiled tiles, ensure roof covering is clean, dry and dust free.

- Remove protective backing and dress the front AluFlash apron into the profile of the tiles below to ensure a weatherproof junction.

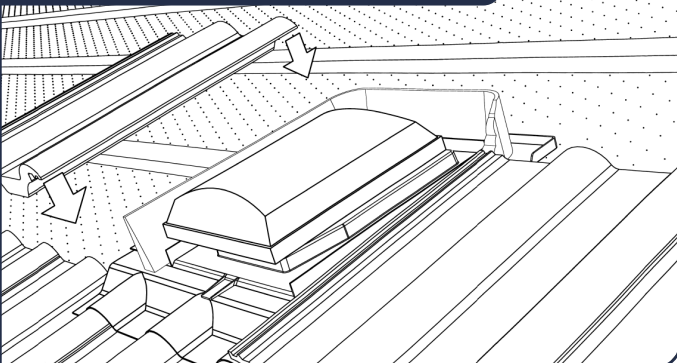
Fig 4: Fixing the cowl into position



ref: PVOB004 - Issue 3, Sept 2024

- Lay the next course of tiles, overlapping the Versa-Tile on each side and compressing the foam filler. It may be necessary to remove adjacent tile nibs to prevent tiles “kicking-up”.
- Fix adjacent tiles where necessary (Fig 5).

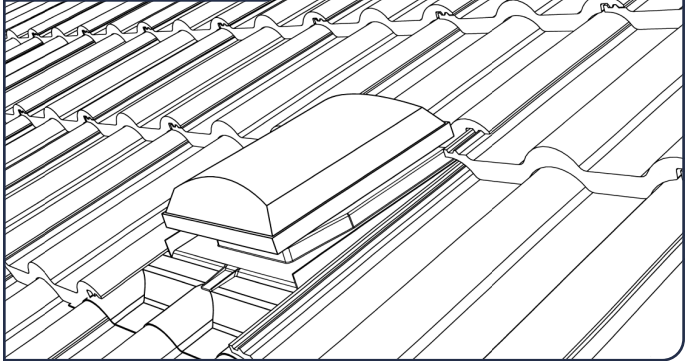
Fig 5: Fix adjacent tiles where necessary



ref: PVOB004 - Issue 3, Sept 2024

- Continue tiling in the normal way. When positioning the tile directly behind the vent, the front edge of the tile must butt up to the back of the cowl of the vent (Fig 6)

Fig 6: Continue Tiling



ref: PVOB004 - Issue 3, Sept 2024

4.0 AFTER SALES AND REPLACEMENT PARTS

For technical assistance or further product information, including spare parts and replacement components, please contact the After Sales Department.

If ordering spares please quote the serial number of the unit together with the part number, if the part number is not known please give a full description of the part required. The serial number will be found on the identification plate attached to the unit casing.

Telephone 02920 858 400
aftersales@nuaire.co.uk

Technical or commercial considerations may, from time to time, make it necessary to alter the design, performance and dimensions of equipment and the right is reserved to make such changes without prior notice.

5.0 NOTES