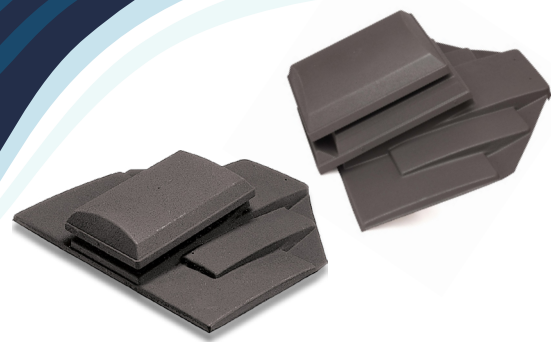


PVCTT9/13-PLAIN

Plain Tile Roof Terminal Installation Manual



1.0 SAFETY INFORMATION



REFER TO INSTRUCTION MANUAL

Read and understand the installation and maintenance manual before installing, operating or maintaining this product.

1.1 IMPORTANT INFORMATION

The following minimum Personal Protective Equipment (PPE) is recommended when interacting with Nuaire product:

- Protective Steel Toed Shoes - when handling heavy objects.
- Full Finger Gloves (Marigold PU800 or equivalent) - when handling sheet metal components.
- Semi Fingerless Gloves (Marigold PU3000 3DO or equivalent) - when conducting light work on the unit requiring tactile dexterity.
- Safety Glasses - when conducting any cleaning/cutting operation or exchanging filters.
- Reusable Half Mask Respirators - when replacing filters which have been in contact with normal room or environmental air.

Nuaire would always recommend a site specific risk assessment by a competent person to determine if any additional PPE is required.

2.0 INTRODUCTION

The PVCTT9-PLAIN is a plain tile roof ventilation terminal with a 125mm diameter spigot.

The PVCTT13-PLAIN is a plain tile roof ventilation terminal with a 150mm diameter spigot.

Fade resistant UV stable surface treatment proven in use over 15 years.

Not suitable for use with: Clay Single Pantiles, Forticrete Centurion, Goxhill Gaelic Tiles, Double Lap or Interlocking Slates.

Suitable for roof pitches of between 35° and 60°

For pitches above or below this consult Nuaire technical services

2.1 CODE DESCRIPTION

| 1 | 2 | - | 3 | - | 4 |
|-------|---|---|-------|---|----|
| PVCTT | 9 | - | PLAIN | - | TC |

1. Product Type: **Tile Roof Terminal**
2. Size: **9 = Ø125mm Spigot**
13 = Ø150mm Spigot
3. Variant: **PLAIN**
4. Colour Option: **BR = Brown**
GY = Grey
RD = Red
RDST = Red Streak
TC = Terracotta

2.2 COWL EXAMPLES

Fig 1: PVCTT9-PLAIN-GY Cowl



Fig 2: PVCTT13-PLAIN-GY Cowl

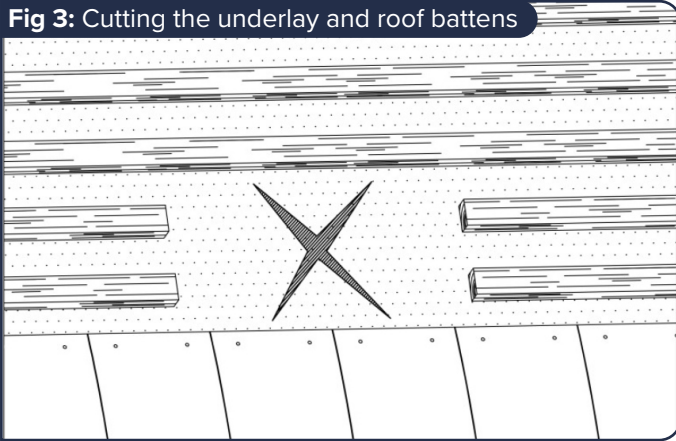


3.0 INSTALLATION

- Select ventilator position between rafters and lay surrounding tiles.
- Mark the ventilator opening on the underlay and cut diagonally, corner to corner (Fig 3).

- The tile battens will also have to be cut to allow the ventilator adaptor access to the roof (Fig 3).

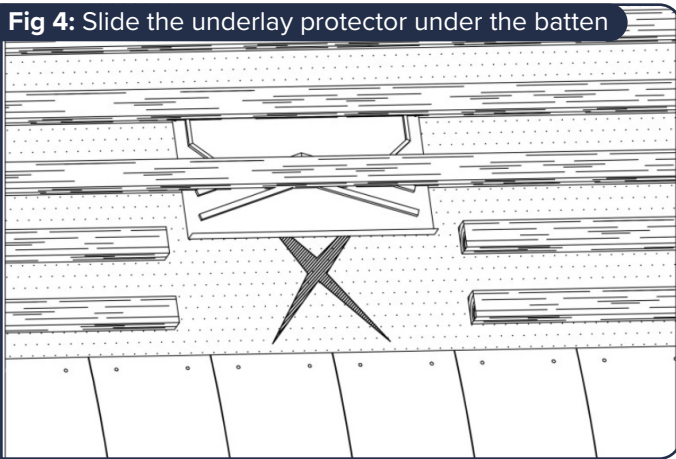
Fig 3: Cutting the underlay and roof battens



ref: PVOB006 - Issue 2, Sept 2024

- Make a slit above the batten over the opening and slide the underlay protector under the batten and through the slit (Fig 4). **Ensure the cut in the underlay does not extend beyond the sides of the underlay protector.**

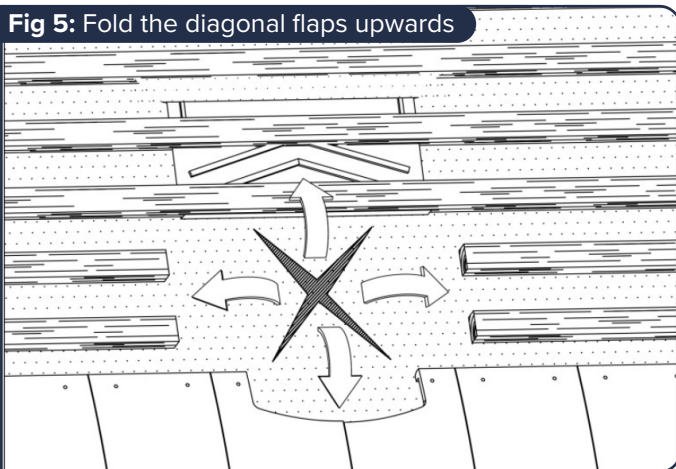
Fig 4: Slide the underlay protector under the batten



ref: PVOB006 - Issue 2, Sept 2024

- Fold the diagonal cuts upwards and secure the top flap to the batten using a nail or staple (Fig 5). **The bottom two tiles might require trimming to allow the adaptor to access the roof.**

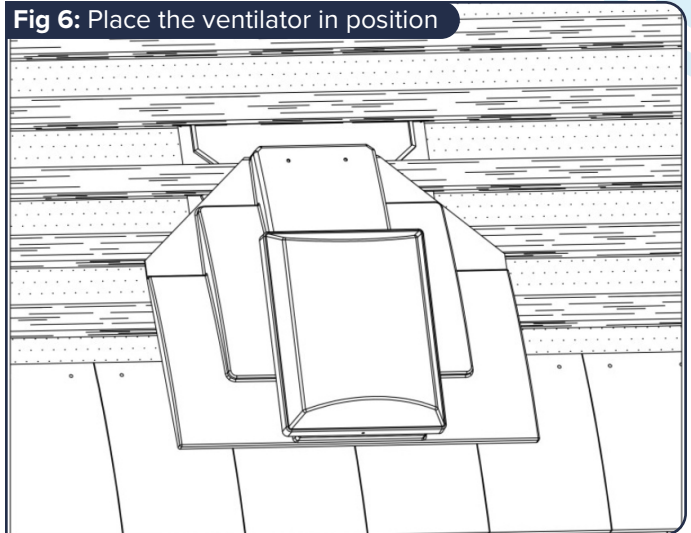
Fig 5: Fold the diagonal flaps upwards



ref: PVOB006 - Issue 2, Sept 2024

- Lay tiles up to the position of the vent
- Snap fit the adaptor onto the rear of the ventilator and place the vent in position, securing in place through the fixing points (Fig 6).

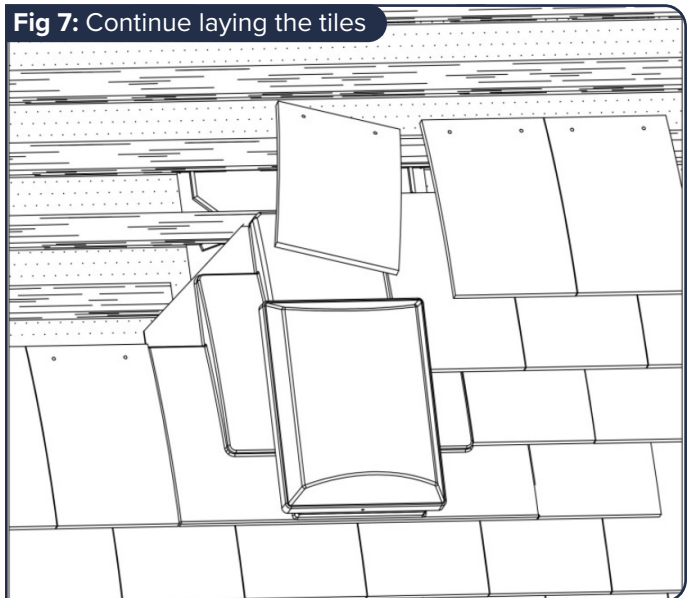
Fig 6: Place the ventilator in position



ref: PVOB006 - Issue 2, Sept 2024

- Continue laying tiles over the vent (Fig 7). **Two tiles will require one nib to be removed from each tile to prevent the tiles from riding on the vent.**

Fig 7: Continue laying the tiles



ref: PVOB006 - Issue 2, Sept 2024

4.0 AFTER SALES AND REPLACEMENT PARTS

For technical assistance or further product information, including spare parts and replacement components, please contact the After Sales Department.

If ordering spares please quote the serial number of the unit together with the part number, if the part number is not known please give a full description of the part required. The serial number will be found on the identification plate attached to the unit casing.

Telephone 02920 858 400
aftersales@nuaire.co.uk

Technical or commercial considerations may, from time to time, make it necessary to alter the design, performance and dimensions of equipment and the right is reserved to make such changes without prior notice.